



sustainable use of natural resources
and social well being

Think like Land

VERDE AZUL CONSULT LDA. | INFORMATIVE REPORT | JULY 2020 | 1st Edition



EDITORIAL



Kemal Vaz
General Manager at Verde Azul

VERDE AZUL'S PROFILE

Verde Azul Consult, Lda (VA) has extensive experience in conducting research in different areas, including training projects, land use planning, participatory planning, community participation, environmental management, environmental impact assessment, land management, urban soil management and processing and statistical analysis of complex data. In this section, only some of the most relevant projects that best illustrate our experience in the Land Management component will be mentioned.

However, among several objectives, the Informative Report has the following:

Baseline studies of development projects and programs;

Management and design of tools and mechanisms for collecting, systematizing and analyzing information/data, as well as participatory methodologies (quantitative and qualitative social research methods and techniques);

Monitoring and Evaluation (M&E) of projects;

Socio-economic studies. Monitoring and Evaluation (M&E) of projects;

i) Publicize Verde Azul's activities in different areas; ii) Promote business marketing; iii) Establish possible partnerships of interest for the company and; iv) Keep the target group up to date on the activities carried out by the company. In a first phase, Verde Azul's Informative Report will have a monthly periodicity.

SAFETY RULES AND STANDARDS FOR COVID-19 PREVENTION



Republic of Mozambique | MISAU | Ministry of Health

Hotline: 84 146 / 82 149

Email: covid19@ins.gov.mz / www.misau.gov.mz



VERDE AZUL IMPLEMENTS THE TERRA SEGURA PROGRAM, UNDER THE LANDSCAPE PROJECT

The Sustenta Project assumes an integrated management of agriculture and natural resources, whose objective is to promote and facilitate integrated rural development, with a view to contributing to the improvement of the living conditions of rural families. In turn, MOZFIP is a project that aims to promote good practices in integrated land management and forest management. On the other hand, the sources of financing are also differentiated.

SUSTENTA OBJECTIVES

- (A) The development of conservation agriculture for food security and income;
- (B) The sustainable management of natural resources and the valorization of wood and non-wood products;
- (C) Strengthening security of land tenure;
- (D) Promoting access to the Right to Use and Benefit from Land, and yet;
- (E) Strengthening government institutions and other stakeholders.

While MOZFIP consists of boosting agroforestry-based value chains, empowering all parties involved, with the necessary resources and creating possible synergies, in order to increase the productivity and income of the beneficiaries, while ensuring the provision of response immediate in the event of a crisis or eligible emergency.

The projects are financed by the World Bank (BM), through the National Fund for Sustainable Development (FNDS), an institution linked to the Ministry of Agriculture and Rural Development (MADER). The project started in September 2017 and is expected to end in May 2021. However, the field work started in February 2018.

The program aims to deliver to beneficiaries covered by the project, namely Small Emerging Merchant Producers (PACEs), Small Farmers (PAs) and, in general, members of communities located in the areas covered by the project, 337,070 titles of Right to Use and Benefit of Land and 430 demarcation certificates for local communities.

The Sustenta and MOZFIP projects span the following provinces: Zambezia (districts of Mocuba, Gile, Alto Molocue, Gurue, Ile,

THE MAIN COMPONENTS OF THE PROJECT ARE THE FOLLOWING:

- (i) Registration and/or regularization of the Right to Use and Benefit from land (RDU-AT);
- (ii) Delimitation of areas of local communities;
- (iii) Elaboration of zoning of areas occupied by local communities;
- (iv) Elaboration of community land use plans and;
- (v) Development of community development agendas.

Mulevala, Mocubela, Maganja da Costa and Pebane), Nampula (Rapa, Ribaue, Malema, Mecuburi districts and Lalaua) and Cabo Delgado province (Macomia, Meluco, Quissanga, Montepuez, Ancuabe, Pemba-Metuge and Ibo districts).

In Cabo Delgado province, work was interrupted due to the political and military situation.

[illegible]

Figure 1: Location maps of the districts covered by the projects and defined communities.

MORE THAN 300 LOCAL COMMUNITIES DELIMITED IN THE PROVINCES OF ZAMBÉZIA AND NAMPULA (cont.)



Figure 2: (left), community members and neighbors, identifying the limits of their communities (confrontation of limits), based on topographic maps (systematic delimitation / cluster). Figure 3: (right), some members of the community traversing the limits of the community, since there were no consensus on the map.

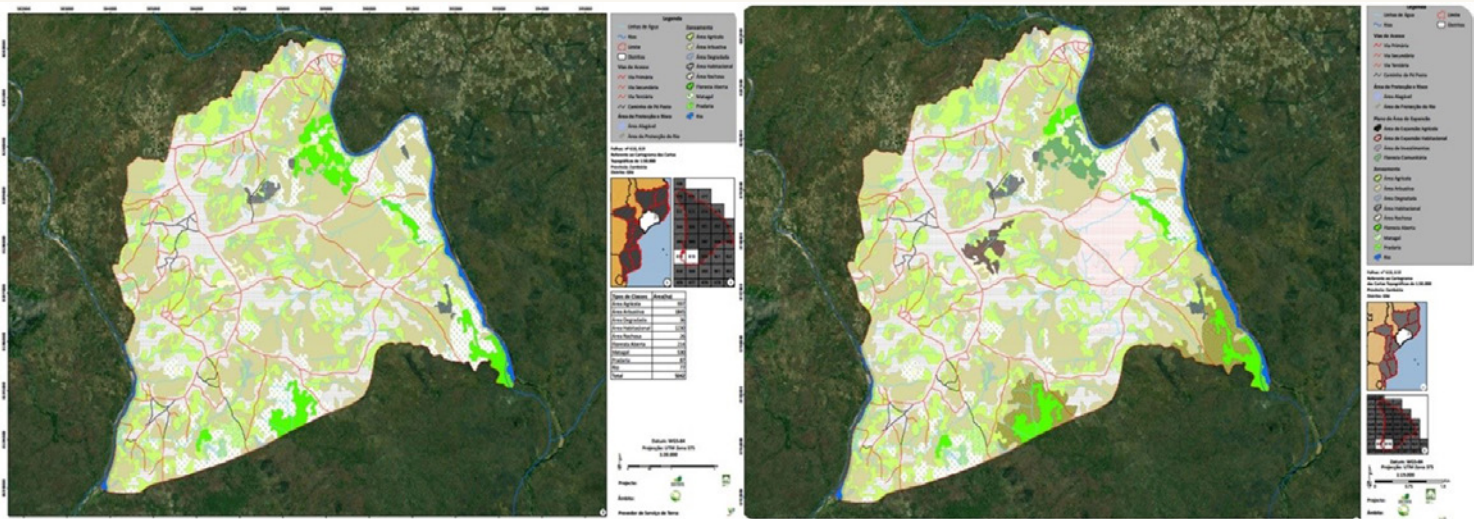


Figures 4 (left) and 5 (right) illustrate community members making participatory maps, during the process of community delimitation, zoning and Community Land Use Plans.



Think like Land

MORE THAN 300 LOCAL COMMUNITIES DELIMITED IN THE PROVINCES OF ZAMBÉZIA AND NAMPULA (cont.)



Figures 6 (left) and 7 (right): Zoning, Maps and Community Land Use Plan for the community of Napido, district of Gilé, province of Zambézia.



Think like Land



sustainable use of natural resources
and social well being

“We strive for harmony between the land,
the people and the entire biotic community.
This harmony promotes the sustainability
of our actions.”

verdeazul.co.mz

IMPLEMENTED PROJECTS IN THE LAND MANAGEMENT COMPONENT:

MILLENNIUM CHALLENGE ACCOUNT MCA - SECURE ACCESS TO LAND IN MOZAMBIQUE

Client name	Service Name	Duration	Country Location	Brief description of services provided
Millenium Challenge Account MCA	Secure Access to Land in Mozambique	June 2009 - June 2013	Zambézia, Nampula, Cabo Delgado and Niassa	

The MCA Land Component allowed us to facilitate a program of improvement in the land administration systems and the title and registration of land rights, through an institutional training program and review of the corresponding policies and legislation. Verde Azul in partnership with HTSPE, Lda (UK), was contracted to provide technical assistance (TA) for these activities in the period from 2009 to 2013, with an impact in four provinces of the country - Zambézia, Nampula, Cabo Delgado and Niassa. The purpose is to implement the Land Component- Secure Access to Land with the aim of producing concrete economic impacts that are measurable in the poorest social strata in the target provinces.

CLUFF - SYSTEMATIC DELIMITATION OF COMMUNITY LAND

Client name	Service Name	Duration	Country Location	Brief description of services provided
CLUFF	Systematic Delimitation of Community Land	June 2013 - June 2014	Tete and Gaza	

Initiated by six donors (DFID, SIDA, SDC, Irish Aid, Netherlands, Denmark) in 2006 and through the Community Delimitation Support Fund- CLUFF, they are interested in supporting and expanding their support in the field of community land. This proposal in its final format aims to position the support of Verde Azul Consult, LDA in response to the Terms of Reference - "District Support for the Administration of Community Lands- with funding from CLUFF". The proposal with a pilot implemented in 2 Provinces- Tete and Gaza, is based on identifying the main actions and costs as well as developing the terms of reference for a National Community Land Program. Our approach presents a strategy with two distinct phases: a) Institutional Training Phase, with a special focus on community boundaries and b) Work Implementation phase, with extension to community demarcations. The second phase is inspired by the last 3 months of the initial phase, thus allowing the plan to be adjusted to the reality of each province and institution.

MITADER- FNDS - LANDSCAPE - SYSTEMATIC DELIMITATION OF COMMUNITY LAND

Client name	Service Name	Duration	Country Location	Brief description of services provided
MITADER- FNDS	LANDSCAPE- Systematic Delimitation of Community Land	November 2017- Ongoing	Zambézia, Cabo Delgado, and Nampula	

Verde Azul is the implementer of the Land Component of the Agriculture and Natural Resources Landscape Management Project (SUSTENTA) and the Mozambique Forest Investment Project (MOZFIP), which are part of the LANDSCAPE project. Both projects are under the management of FNDS, in coordination with the Ministry of Land, Environment and Rural Development (MITADER). LANDSCAPE is being implemented in Zambézia, Cabo Delgado, and Nampula. SUSTENTA: integrates rural families into sustainable agriculture and forest-based value chains in the Project Area. MOZFIP: improving the enabling environment for, and practices in, managing forests and land in targeted landscapes. This will be achieved through the promotion of production and added value activities for selected agriculture and forest-based value chains, improving the security of tenure of rural families and communities, strengthening spatial planning, including at the community level, integrated landscape management, and the institutional capacities of the main public and private institutions at the provincial and district levels and the restoration of degraded lands, critical to value chains.

MUNICIPALITY OF THE CITY OF MAPUTO - PROMAPUTO - CONSULTING TO SUPPORT THE DESIGN AND EXECUTION OF THE DUAT'S MASSIVE REGULARIZATION PROGRAM

Client name	Service Name	Duration	Country Location	Brief description of services provided
Maputo City Municipality	PROMAPUTO - Consulting to Support the Design and Execution of the DUAT's Massive Regularization Program	August 2014- August 2016	Maputo	

The consultancy service was to provide technical assistance to the CMM to strengthen the regularization of land tenure and land registration in peri-urban areas in the city of Maputo, including the development methodology and supervision mechanisms for plotting and land registration. The massive DUAT regularization program was applied in a specific area, in order to be improved and applied in a wider range of informal settlements, with the aim of establishing a routine that will generate an increase in efficiency and effectiveness in the allocation of DUATs in Maputo .

IFAD AND CEPAGRI - PROSUL – SAFE LAND ACCESS CONSULTING SERVICES FOR PRO-POOR PROJECT BENEFICIARIES

Client name	Service Name	Duration	Country Location	Brief description of services provided
IFAD and CEPAGRI	PROSUL – Consultancy Services for Secure Access to Land for Beneficiaries of the Pro-Poor Project - Value chains in the Maputo and Limpopo corridors	January 2015- December 2018	Maputo	

The project aims to provide support to communities and associations in the development of economic activities. Verde Azul enters the component of guaranteeing the rights to land and natural resources, including the application and issuance of Land Use Rights - DUAT's (Right to Use and Benefit of Land). VA develops land use management plans to assist CEPAGRI in supporting associations involved in PROSUL to guarantee their land rights. The work includes the delimitation of community land, the processing of DUATs, the demarcation of land use areas and documentation of group rules and social status to regulate the allocation and use of land. The project will be developed in close collaboration with the provincial and district land authorities in Maputo and Limpopo Corridors.

USAID - INTERMEDIATE EVALUATION OF THE PERFORMANCE AND EVOLUTION OF THE PROJECT FOR THE ADAPTATION OF THE COASTAL CITIES OF MOZAMBIQUE (CCAP)

Client name	Service Name	Duration	Country Location	Brief description of services provided
USAID	Intermediate Evaluation of the Performance of the Evolution of the Project for the Adaptation of the Coastal Cities of Mozambique (CCAP)	October 2016- January 2017	Pemba and Quelimane	

Verde Azul in partnership with Eccodit carried out an evaluation of the CCAP project that is being implemented by Chemonics. This assessment presents an opportunity to resolve any project performance issues, as well as to inform the design of climate change adaptation projects at the municipal level, to improve the project's intrinsic organizational learning and to provide important information on integrated programs to stakeholders in Mozambique and implementing partners. Evaluation of the Local Climate Adaptation Plan (PLA) with the municipalities of Pemba and Quelimane and their partners.

UNICEF-INAS - RE-REGISTRATION OF THE BENEFICIARIES OF THE INAS PROGRAMS

Client name	Service Name	Duration	Country Location	Brief description of services provided
UNICEF-INAS	Re-registration of the Beneficiaries of the INAS Programs	October 2014- October 2015	Maputo	

INAS intends to re-register 424,019 Households (AF) beneficiaries of the Basic Social Subsidy Program (PSSB) and the Direct Social Support Program (PASD) in the new Information Management System (SGI) of the National Institute of Social Action. The Re-Registration of beneficiary PA's aims to improve the targeting of beneficiaries, detecting errors of inclusion and exclusion in PA's, facilitating responding to these errors, thereby improving the efficiency and fairness in the distribution of social transfers by INAS.